



THE **RODNEY** GROUP

SHEDS & BARNES

DESIGN & KITSET PRICING

A GUIDE TO DESIGNING
THE RIGHT BUILDING FOR YOU





Welcome to our Sheds & Barns Design Guide.

In this document you'll discover the parameters we can offer, the range of styles and specifications available to you, and get an idea of overall costs for your new building.

CONTENTS:

01 **SHELL**

Main structure

02 **FIT OUT**

Internal Specifications

03 **BUDGET RANGE**

Price Range Guide



The background of the entire page is a dark gray architectural line drawing. It depicts a complex structural framework, likely a roof or floor slab, composed of numerous intersecting lines that form a grid-like pattern. The lines are drawn in a perspective that gives a three-dimensional feel to the two-dimensional drawing.

01

SHELL

The main structure of your building.

Let us help design a structure that suits your needs, and budget.

01 SHELL STYLE & DIMENSIONS

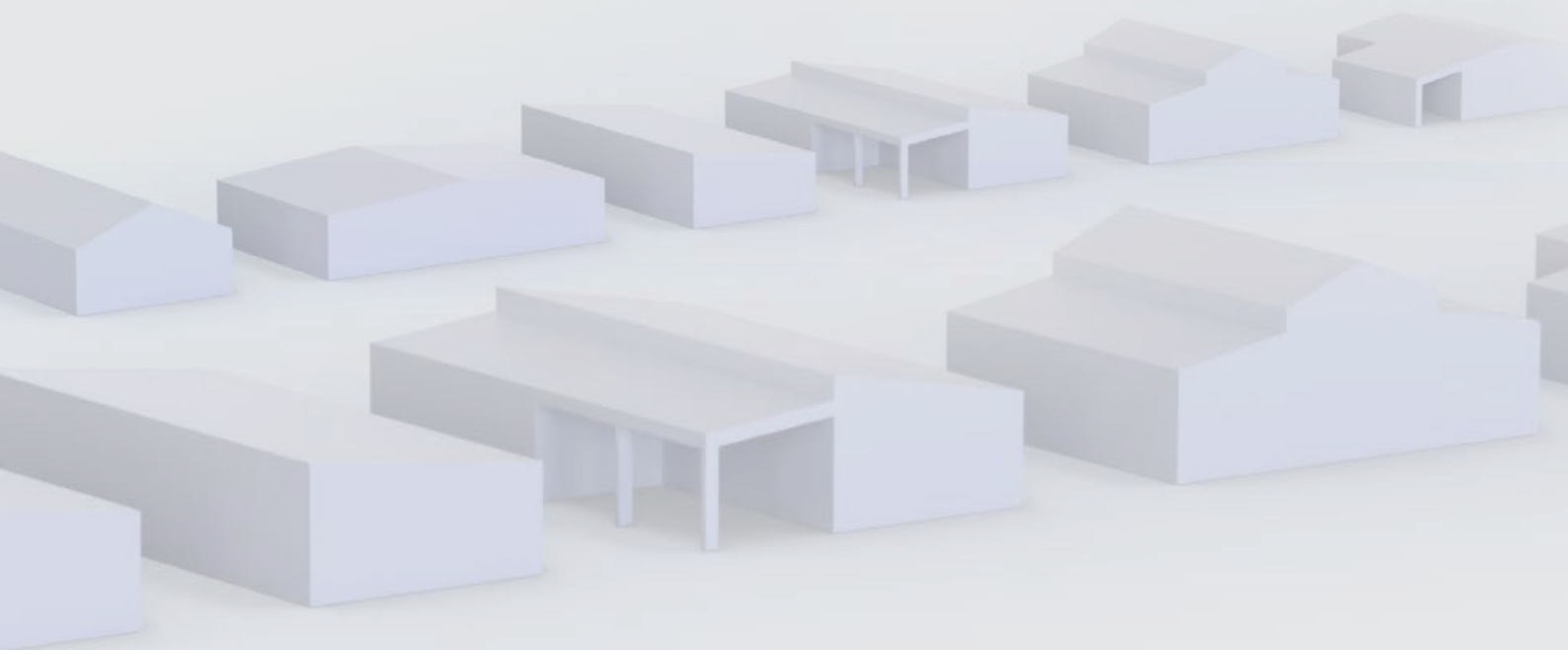
The first step of your construction project is to design your Shed or Barn, ensuring it's fit for purpose and looks the part. From Traditional Gable to Mono Pitch, American Style Barns, and bespoke designs, we offer various shapes and styles, custom designed to meet your requirements with longevity and durability.

Our steel portal clear span designs provide open, unobstructed spaces, while alternative designs can include partitions for different uses. Whether your building is fully enclosed or includes lean-tos and open bays, we can adjust the spaces to suit your needs. Our design experts can help you maximise space and utility.

Additionally, we offer customisable features to ensure your shed meets your functional needs and complements your personal style and the surrounding environment.

BUILDING PARAMETERS

MAIN BUILDING SPAN	6 - 30 m
KNEE (EAVE) HEIGHT	2.4 - 6 m
BAY WIDTH	2 - 6 m
LEAN-TO SPAN	2 - 15 m



DESIGN CONSIDERATIONS

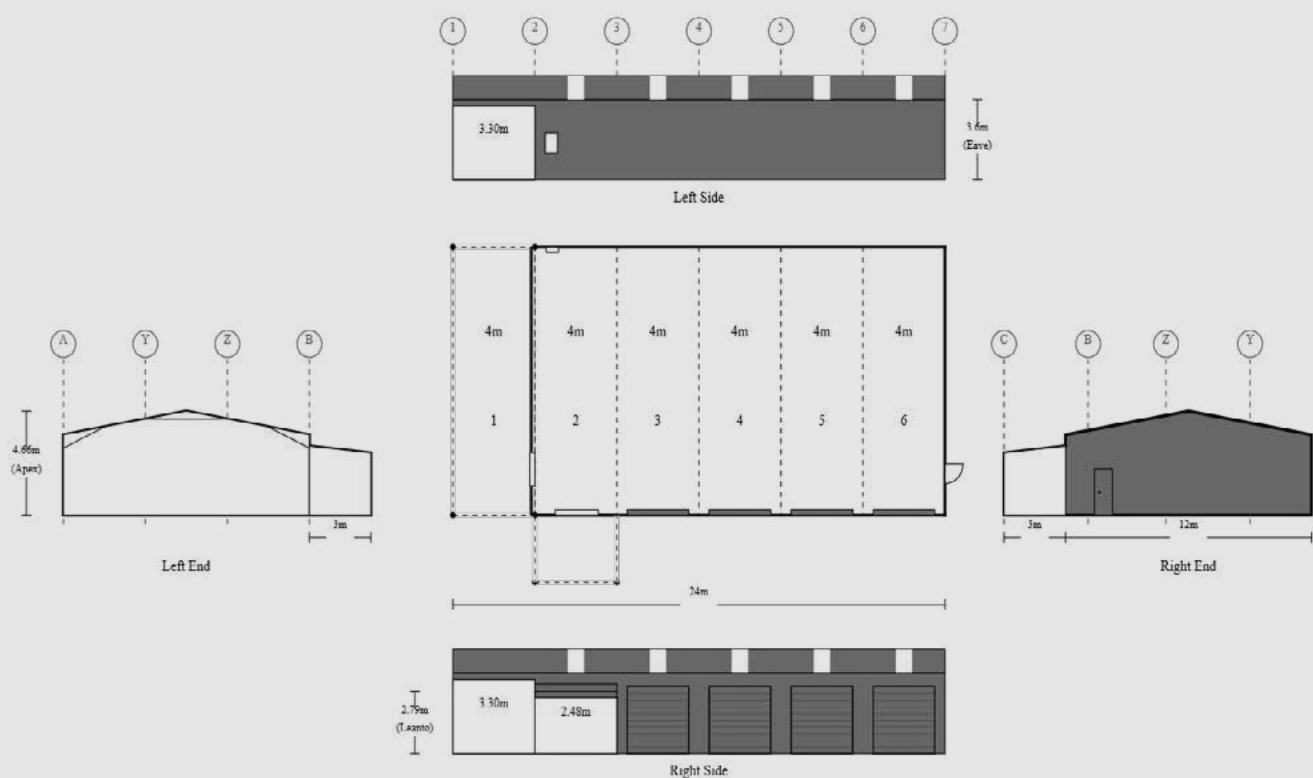
USE	SIZE	ACCESS	ADDITIONALS	CLOTHING
STORAGE WORKSHOP GARAGING UTILITY	SPAN LENGTH HEIGHT PITCH	JOINERY SECTIONAL & ROLLER DOORS OPEN BAYS	CANOPIES VERANDAS LEAN-TOS VENTILATION	PROFILE CLEARLIGHTS FLASHINGS GUTTERS

01 SHELL FLOOR PLAN & ELEVATIONS



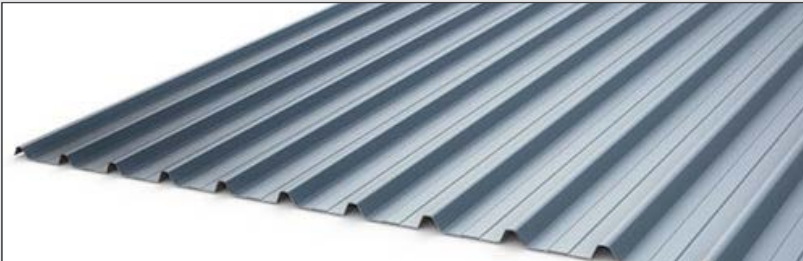
To help get the process under way, we produce a kitset quote including a floor plan and elevations of your shed. From this, we can narrow down the price range of your build, and get a good idea of the layout and look of your building.

We can come up with this plan ourselves based on your specified dimensions, or we can reference a sketch or existing plan provided by you to ensure we're on the same page with the design.



01 SHELL FEATURES

We offer a wide range of features to personalise your building. Whether you're looking to add value, style or functionality, these features will set your building apart and make it your own.



CLADDING PROFILES

Our Colorsteel cladding options offer a durable and stylish solution for your building needs, available in a wide range of colors and profiles to suit any design.



STEEL FRAMING

Our sheds are constructed with robust steel framing, ensuring superior strength and durability.



VERMIN PROOFING

Our sheds feature effective vermin proofing, ensuring your stored items remain safe and free from pests.



WIDE OPEN SPANS

Our sheds feature clear open spans, providing unobstructed space and maximum flexibility for your storage and usage needs.



OVERLAPPING GIRTS & PURLINS

Our sheds utilise overlapping girts and purlins, enhancing their strength and durability to withstand even the toughest conditions.



NO KNEE BRACES

Our sheds can be designed without knee braces, providing a clean and spacious interior.



ROLLER & SECTIONAL DOORS

Our sheds can be equipped with roller or sectional doors, offering convenient access and secure closure.



LEAN-TOS AND CANOPIES

Our sheds can be customised with lean-tos and canopies, providing additional covered space for versatile outdoor use and protection.



02

FIT OUT

The internal spaces that make up your building.

From internal walls, doors and ceilings, to finishing touches like paint, wallpaper and window treatments.

02 FIT OUT SPECIFICATIONS

When it comes to choosing the specifications of your internal fit out, we have a lot to offer to suit all budgets. From minimalist to luxurious, we can tailor your interior to fit your vision.



LININGS

Plywood is a popular choice for shed linings due to its durability, ease of installation, and ability to provide a smooth, paintable surface.



MEZZANINE

Timber framed mezzanines can add additional storage space and maximise the space of your shed.



PARTITIONS

Shed partition walls are essential for creating separate storage areas and maximizing the functional space.



ELECTRICAL & SECURITY

Installing electrical features like lights, power points, and security systems in a shed enhances its functionality, safety, and convenience.



PLUMBING

Adding plumbing to a shed for features like laundries, wash basins, and toilets can significantly increase its utility.



VENTILATION

Incorporating ventilation options like spinaway vents in a shed helps maintain airflow, and regulate temperature.



FLOOR FINISHING

Polished concrete floors in a shed offer a sleek and durable surface that enhances the overall aesthetic.



FINAL TOUCHES

Painting the shed framing can provide a polished finish, enhancing the overall aesthetic appeal and protecting from wear and tear.

03

BUDGET RANGE

There are two main factors involved in determining the price of your new building:

01: SCALE

The overall size of the spaces will have an effect on the cost per m². The larger the area, the more efficient the supply of materials and construction, and therefore the lower the overall cost.

02: SPECIFICATIONS

We offer a wide range of products to suit every budget. From Zinalume and Colorsteel cladding to various internal linings and electrical fixtures. The specifications you choose affect the overall cost of your project.

03 BUDGET RANGE KITSET



Whatever your Budget, we have a Product that Suits Your Needs.

We can offer the kitset only, or full construction packages including foundations and assembly - providing you with a weather tight, lock-up ready structure that you can fit out yourself. Or, let us take care of the full project for you and include a fully fitted out interior.

See below for a general range of square metre pricing that covers the kitset, and construction including foundations (which we like to call the Building Envelope). See following page for internal fit out pricing.

KITSET

Steel Superstructure, Steel Girts & Purlins, Roofing & Cladding, Roller Doors, Gutters & Flashings.

\$150/m²

LOW END ESTIMATE

\$350/m²

HIGH END ESTIMATE

CONSTRUCTION

Foundations, Kitset Delivery & Construction, Joinery and Custom Flashing Installation.

\$250/m²

LOW END ESTIMATE

\$650/m²

HIGH END ESTIMATE

ALL PRICES INCLUDE GST

03 BUDGET RANGE FIT OUT



Below is a budget guide to fit out the interior of your kitset. For shed areas this may be ply lining and electrical. Veranda fit out items may include concrete patios, decks and lighting. Add your shell price to your fitout price for an idea of overall cost.

Budget ranges are a guide only. We'd be more than happy to discuss your custom build in detail and put a full custom proposal together for you.

WALL FRAMING & MEZZANINES

Timber Wall Framing, Mezzanine Structure, Flooring, Balustrades & Stairs.

\$600/m²

LOW END ESTIMATE

.....

\$900/m²

HIGH END ESTIMATE

SHED AREAS FIT OUT

Additional Cost to Include Internal Linings, Plumbing and Services.

\$100/m²

LOW END ESTIMATE

.....

\$400/m²

HIGH END ESTIMATE

ALL PRICES INCLUDE GST