



THE **RODNEY** GROUP

ARCHITECTURAL HOMES

DESIGN & BUDGET GUIDE

A GUIDE TO DESIGNING YOUR
BESPOKE ARCHITECTURAL HOME





Welcome to our Architectural Home Design Guide.

In this document you'll learn about our design process, the range of styles and specifications available to you, and get an idea of overall costs for your new architectural home.



CONTENTS:

01 **STYLE & VISION**

Creating a detailed brief

02 **CONCEPT DESIGN**

Plans and previews

03 **FIT OUT SPECIFICATIONS**

Internal product specifications

04 **BUDGET**

Price Range Guide

01 STYLE & VISION

When planning your new architectural house build, it's crucial we create a detailed brief to ensure your vision is captured. Here are some key considerations:

DEFINE YOUR VISION: Think about the style and feel you want for your home. Consider the functionality of each space and how it will be used daily. Providing images or examples of designs you like can be very helpful.

BUDGET AND TIMELINE: Clearly outline your budget and any financial constraints. Discuss your desired timeline, including any critical deadlines or milestones.

SITE AND LOCATION: Share details about the site, including the size and shape of the lot, orientation, views, and any specific site conditions that might impact the design.

LIFESTYLE AND NEEDS: Consider your lifestyle and any specific needs your family might have. Think about living spaces, storage needs, and other personal preferences.

We offer a complimentary meeting where you can discuss your ideas directly with our award-winning architect. This meeting is an opportunity to share your thoughts, ask questions, and receive professional insights. Our architect can provide valuable advice, inspiration, and innovative ideas to help bring your dream home to life.



ULTRAWIDE INSET GABLE WITH MONOPITCH POOL HOUSE

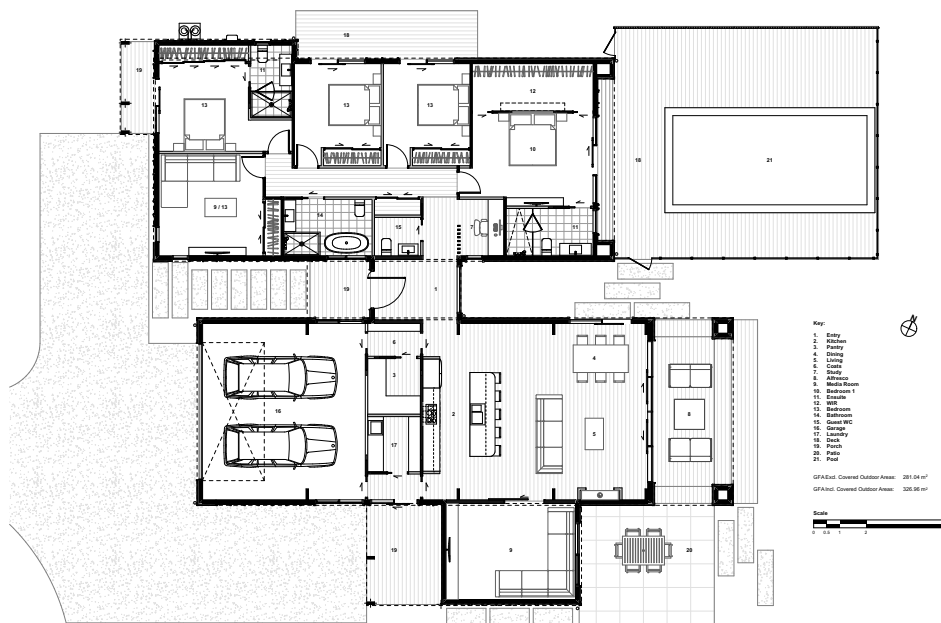


DUAL-SLOPED ASYMMETRICAL ROOF DESIGN

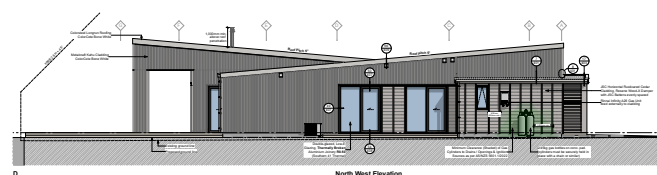
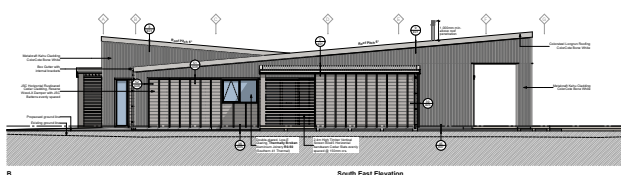
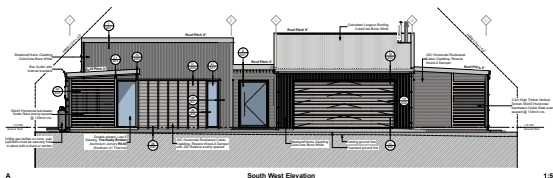
02 CONCEPT DESIGN

After our initial meeting, we'll propose an initial fee for our architect to create detailed floor plans, elevations, and a site plan. These plans will outline your home's layout, positioning on your property, and exterior views.

Our architect will incorporate your requirements and preferences, while offering creative, modern ideas for a truly unique, bespoke design. Once ready, we'll review the plans with you and make any necessary adjustments.



FLOOR PLAN



ELEVATIONS

03 FIT OUT SPECIFICATIONS

When it comes to choosing the specifications of your internal fit out, we have a lot to offer to suit a range budgets and styles. From minimalist to luxurious, we can guide you through our interior fit out specifications to fit your vision.



LININGS

Walls, ceilings and architraves. Traditional Gib, stop and paint, feature timber, or wallpaper. We offer a variety of options to suit your taste.



DOORS

Internal doors including swing doors, cavity sliders or sliding barn doors.



CABINETRY

Kitchens, laundries and cupboard cabinetry. We have a wide range of choices to suit a variety of styles.



ELECTRICAL & SECURITY

From light switches and power points to security cameras and alarms. We can design an electrical plan to suit your new build.



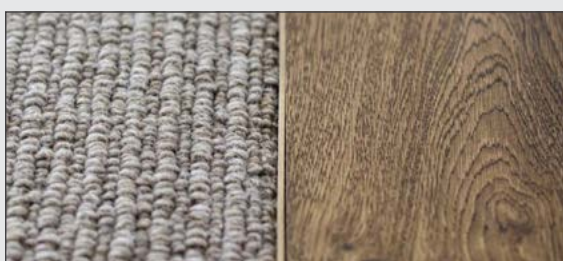
PLUMBING

More than just pipes, we can help with tapware, shower fittings, sinks and basins. We have a range to suit all budgets.



HVAC

Home ventilation systems including heat pumps and ducted solutions.



FLOOR COVERINGS

From polished concrete to laminate, tile and carpet. We offer a wide range of flooring options.



FINAL TOUCHES

Curtains, sheers and blinds. Finish of your space with our beautiful range of window treatments.

04 BUDGET RANGE



There are two main factors involved in determining the price of your new home:

01: SCALE

The overall size of the spaces will have an effect on the cost per m². The larger the area, the more efficient the supply of materials and construction, and therefore the lower the overall cost.

02: SPECIFICATIONS

We offer a wide range of products to suit every budget. From Colorsteel cladding to Red Cedar, from polished concrete flooring to lush NZ wool carpet. The specifications you choose affect the overall cost of your project.

We aim to provide a transparent and straightforward pricing process. By considering the size of your home and the quality of materials and finishes you desire, we can develop a budget that aligns with your vision. This approach ensures that your dream home is both achievable and tailored to your specific needs and tastes.

See below for a general price guide.

ARCHITECTURAL HOME

Architectural Design, Engineering, Foundations, Construction Materials, Labour, Internal Fit Out Products and Installation.

\$3,600/m²

LOW END ESTIMATE

PRICES INCLUDE GST

\$4,800/m²

HIGH END ESTIMATE

Once you're satisfied with the concept designs and the budget aligns with your expectations, we can proceed to a comprehensive, detailed proposal. For more information, please refer to our Comprehensive Pricing Proposal Guide.